

## S/S Lid Knob



KHN-OA01

$\phi=7\text{mm}$   $\phi=8\text{mm}$  C/C Hole=78mm



KHN-OA02

A\*T=5\*12 C/C Hole=97mm



KHN-OA03

$\phi=7\text{mm}$   $\phi=8\text{mm}$  C/C Hole=98mm



KHN-OA04

A\*T=5\*12 C/C Hole=108mm



KHN-OA05

T=3mm C/C Hole=93mm



KHN-OA06

A\*T=5\*12 C/C Hole=110mm



KHN-OA07

$\phi=7\text{mm}$   $\phi=8\text{mm}$  C/C Hole=109mm



KHN-OA08

T=0.5mm C/C Hole=91mm



KHN-OA09

T=0.5mm C/C Hole=91mm



KHN-OA10

T=0.8mm  $\phi=12\text{mm}$

## S/S Lid Knob



KHN-OA11

T=0.8mm  $\phi$ =12mm C/C Hole=78mm



KHN-OA12

T=0.8mm  $\phi$ =12mm C/C Hole=205mm



KHN-OX01

$\phi$ =7mm



KHN-OX02

$\phi$ =7mm



KHN-OX03

A\*T=5\*12 C/C Hole=93mm



KHN-OX04

A\*T=5\*12 C/C Hole=100mm



KHN-OX05

A\*T=5\*12



KHN-OX06

A\*T=5\*12 C/C Hole=92mm



KHN-OX07

A\*T=5\*12 C/C Hole=103mm



KHN-OX08

A\*T=5\*12

## S/S Lid Knob



KHN-OX09

A\*T=5\*12 C/C Hole=103mm



KHN-OX10

A\*T=5\*12



KHN-OX11

A\*T=5\*12 C/C Hole=103mm



KHN-OX12

A\*T=5\*12



KHN-OX13

A=1.2 +  $\phi 7$



KHN-OX14

T=3 C/C Hole=93mm



KHN-OX15

A\*T=4\*11mm C/C Hole=115mm



KHN-OX16

A<sup>2</sup>=7\*7 C/C Hole=106mm



KHN-OX17

A\*T=4\*28mm

## S/S Lid Knob



KHN-OK01

T=0.5mm C/C Hole=84mm



KHN-OK02

T=0.5mm



KHN-OK03

T=0.5mm C/C Hole=92mm



KHN-OK04

T=0.5mm C/C Hole=86mm



KHN-OK05

T=0.5mm C/C Hole=91mm



KHN-OK06

T=0.5mm C/C Hole=91mm



KHN-OK07

T=0.8mm  $\Phi$ =12mm C/C Hole=103mm



KHN-OK08

T=0.8mm  $\Phi$ =10mm C/C Hole=103mm



KHN-OK09

T=0.8mm  $\Phi$ =14mm C/C Hole=103mm



KHN-OK10

T=0.8mm  $\Phi$ =16mm C/C Hole=103mm

## S/S Lid Knob



KHN-OT01

T=0.8mm  $\phi=6\text{mm}+50\text{mm}$



KHN-OT02

T=0.8mm  $\phi=6\text{mm}+50\text{mm}$



KHN-OT03

T=0.8mm  $\phi=6\text{mm}+52\text{mm}$



KHN-OT04

T=0.8mm  $\phi=6\text{mm}+50\text{mm}$



KHN-OT05

T=0.8mm  $\phi=6\text{mm}+50\text{mm}$



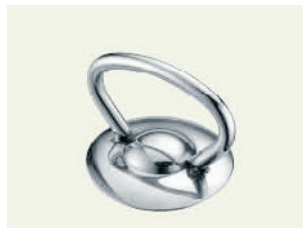
KHN-OT06

T=0.8mm  $\phi=6\text{mm}+50\text{mm}$



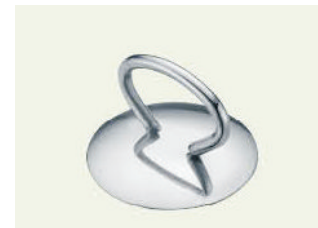
KHN-OT07

T=0.8mm  $\phi=6\text{mm}+52\text{mm}$



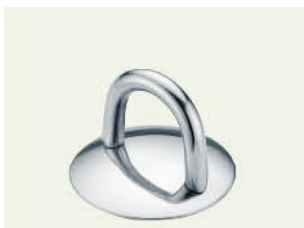
KHN-OT07

T=0.8mm  $\phi=6\text{mm}+52\text{mm}$



KHN-OT07

T=0.8mm  $\phi=6\text{mm}+71\text{mm}$



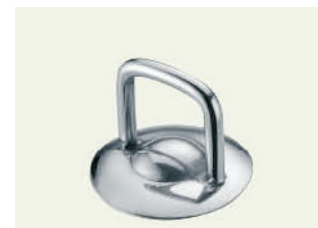
KHN-OT10

T=0.8mm  $\phi=8\text{mm}+62\text{mm}$



KHN-OT11

T=0.8mm  $\phi=8\text{mm}+51\text{mm}$



KHN-OT12

T=0.8mm  $\phi=6\text{mm}+52\text{mm}$



KHN-OT13

T=0.8mm  $\phi=8\text{mm}+60\text{mm}$



KHN-OT14

A\*T=5\*12mm+D=71\*0.9



KHN-OT15

A+T= $\phi 10\text{mm}+\phi 5\text{mm}$  D=71\*0.9

## S/S Lid Knob



KHN-OM01

D=60mm



KHN-OM02

D=58mm



KHN-OM03

D=50mm



KHN-OM04

D=64mm



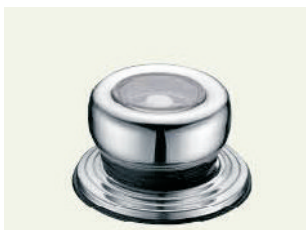
KHN-OM05

D=64mm



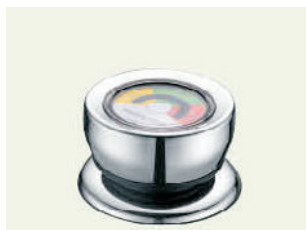
KHN-OM06

D=64mm



KHN-OM07

D=56mm



KHN-OM08

D=64mm



KHN-OM09

D=58mm



KHN-OM10

D=62mm

## S/S Lid Knob



KHN-OP01

D=43mm



KHN-OP02

D=43mm



KHN-OP03

D=43mm



KHN-OP04

D=43mm



KHN-OP05

D=45mm



KHN-OP06

D=46mm



KHN-OP07

D=46mm



KHN-OP08

D=46mm



KHN-OP09

D=47mm



KHN-OP10

D=46mm



KHN-OP11

D=46mm



KHN-OP12

D=45mm



KHN-OP13

D=56mm



KHN-OP14

D=60mm



KHN-OP15

D=45mm

## S/S Lid Knob



KHN-OP16

D=52mm



KHN-OP17

D=52mm



KHN-OP18

D=45mm



KHN-OP19

D=51mm



KHN-OP20

D=35mm



KHN-OP21

D=26mm



KHN-OP22

D=26mm



KHN-OP23

D=56mm



KHN-OP24

D=57mm



KHN-OP25

A\*B=60\*40mm



KHN-OP26

A\*B=75\*44mm



KHN-OP27

A\*B=69\*45mm



KHN-OP28

D=35mm



KHN-OT29

D=52mm

Wire : 8dia.mm



KHN-OT30

D=100mm

Wire : 10Dia.mm

## S/S Lid Knob



KHN-OT31

D:100mm

Wire : 8dia.mm



KHN-OT32

D:95mm

Wire : 8dia.mm

## Lid Knob for Sugar Bowl or Small Pot



KHN-OA1

D=14mm H=11mm



KHN-OA2

D=20mm H=19mm



KHN-OA3

D=14mm H=19mm



KHN-OA4

D=14mm H=22mm



KHN-OA5

D=20mm H=18mm



KHN-OA6

D=16mm H=21mm



KHN-OA7

D=14mm H=39mm



KHN-OA8

D=28mm H=22mm



KHN-OA9

D=18mm H=20mm



KHN-OA10

D=21mm H=17mm



KHN-OA11

D=20mm H=23mm



KHN-OA12

D=27mm H=17mm



KHN-OA13

D=28mm H=24mm



KHN-OA14

D=31mm H=30mm



KHN-OA15

D=26mm H=37mm